

ESTABLISHED 1937

TAYLOR & CRAWLEY



MONACO DYNASTY REGAL





# MONACO DYNASTY REGAL

**SUPPLIED IN 2003 TO SPECIAL ORDER BY BUDDY GREGG MOTOR HOMES IN KNOXVILLE TENNESSEE**

**45,000 MILES**

This 2003 Monaco Dynasty Regal finished in Vintage Wine is built on the 42ft Roadmaster S-Series semi-monocoque chassis with triple slide-outs running on Air-Glide suspension utilising 10 air bags and 10 Bilstein dampers. Powered by the Cummins ISL 400 engine with 400bhp, 1,200 lbs/ft of torque @ 1,300rpm and driving through an Allison six speed automatic gearbox with automatic traction control.

Changes to the standard specification include the addition of a King size bed, deleted washer/dryer – replaced by extra storage space and a pair of barrel chairs in place of the second sofa.

Special order items include:

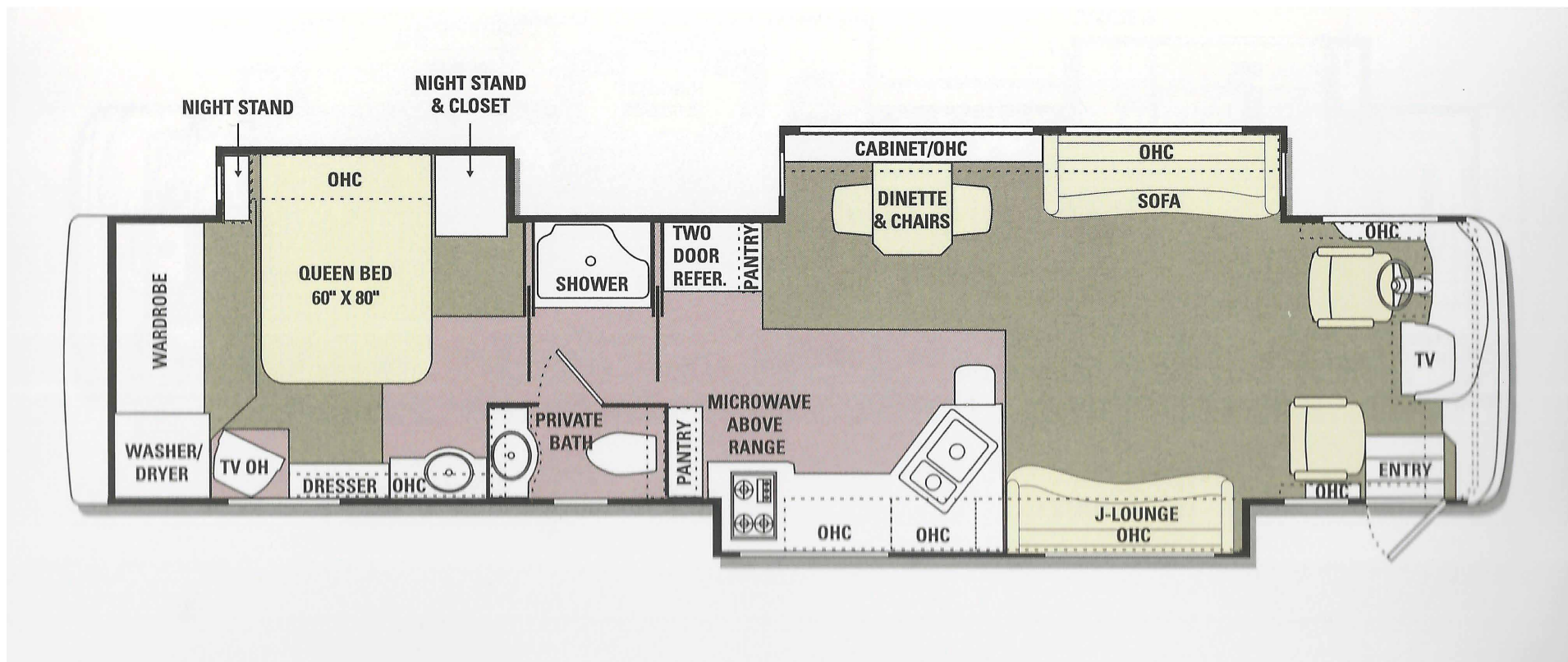
- 240 volt electrics
- Natural maple wood
- King size bed
- Tiled floor
- European driving lights and indicators
- Drivers side slide has 2 barrel chairs and an occasional table
- Passenger side slide has a sofa in Signature fabric











Standard items include:

- 42ft Roadmaster chassis
- Cummins ISL 400bhp diesel engine
- Allison 6 speed auto box
- Automatic traction control
- Antilock brakes
- 2 stage Jake brake
- Automatic air levelling system
- Rear view CC TV
- Smart wheel
- Leather 6 way powered driver's and passenger seats
- Cruise control
- 6 CD player
- Carefree and Girard automatic awnings
- 10 Kilowatt generator
- Climate control
- Shower
- WC and sink
- Refrigerator
- 3 burner cooktop
- Microwave
- Dining table
- Kitchen countertop with stainless steel sink









